

SMART BRIDGE Suite 3.1

Installation Guide

(Demo Edition)

October 2009



2260 Wednesday Street, Suite 500
Tallahassee, Florida 32308

For more information please visit:

www.smartbridgetech.com

This software and all associated documentation is the exclusive property of Smart Bridge Tech, Inc. and use is subject to the terms of the License Agreement. This publication may not be reproduced in any form, by any method, for any purpose, either in part or in its entirety, without the express written permission of SMART BRIDGE TECH, Inc.

Copyright 2008-2010, Smart Bridge Tech, Inc. All rights reserved.

SMART BRIDGE SUITE 3.1 Installation Guide

(Demo License Version)

This document describes the generic installation and program authorization procedure for SMART BRIDGE Suite 3.1 Demo version.

1. SYSTEM REQUIREMENT

Operating System:

Microsoft Windows XP/2000/2003/Vista/2008

Memory:

The minimum requirement is 512MB. We do recommend 1GB or larger.

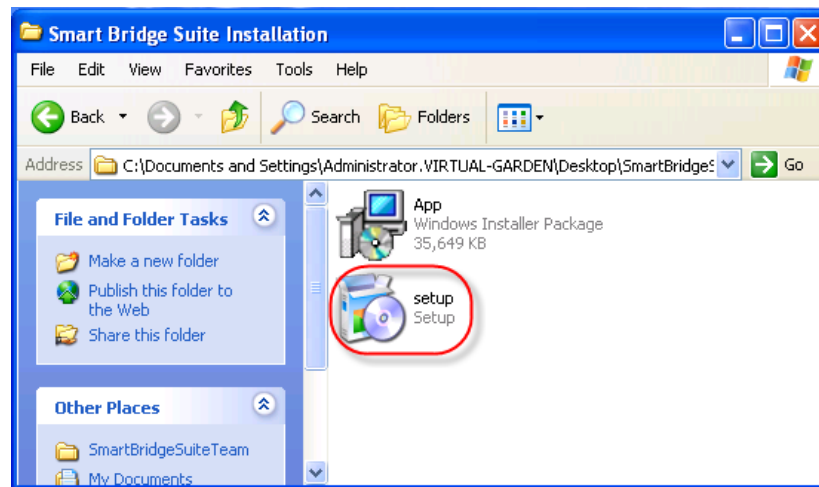
Hard Disk Space:

The first installation requires a minimum of 100MB free hard drive space.

2. INSTALLATION

Attention: SMART BRIDGE SUITE 3.1 must be installed under an account owned by the administrator. After the entire installation is completed, the other users can log in and request license to run the program.

To start the installation enter the directory “Smart Bridge Suite Installation”, run “Setup.exe”, then follow the instructions.



The SMART BRIDGE Suite runs on Microsoft .NET Framework 3.5 SP1. The installation program will automatically detect if the .NET framework has been installed and only installs it when necessary.

When the installation is completed a shortcut named “Smart Bridge Suite” will be created on the desktop. A shortcut group is also installed in the Windows Start Menu.



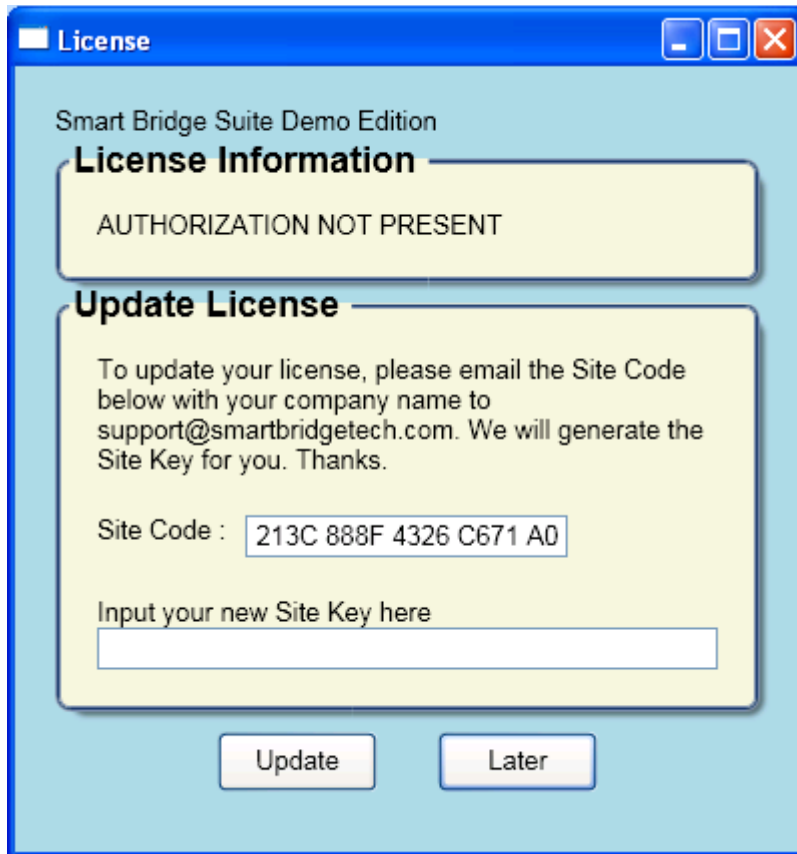
The shortcut “Smart Bridge Suite” is used to start the Smart Bridge Suite main program.

The shortcut “Check for Updates” is to update Smart Bridge Suite to the latest version.

3. Program Authorization

The authorization of Smart Bridge Suite Demo is per-user based, which means each user account must be authorized individually. To authorize, please follow the following steps:

1. Log on to the account to be authorized.
2. When Smart Bridge Suite is run for the first time, a license dialog window will show up:



3. Copy the Site Code and email it to support@smartbridgetech.com along with your registration information (company name, contact person, phone number and mailing address) .
4. After we receive your email with the Site Code, we will generate a Demo Site Key and email it back to you. Once you receive the Site Key, please add it to the “Site Key” field and click the “Update” button;
5. If the authorization process is successful, the main program of Smart Bridge Suite will be loaded and the authorization is completed.

4. UNINSTALL

Following are the steps to uninstall Smart Bridge Suite:

Go to *Start -> Control Panel -> Add or Remove Programs*, find item “Smart Bridge Suite” and choose “Remove”.

5. Problems and Questions

If you encounter any problem, please send an email to support@smartbridgetech.com . Our staff will try our best to help you.